



REGIONAL SPECIALISED METEOROLOGICAL CENTRE-TROPICAL CYCLONES, NEW DELHI TROPICAL WEATHER OUTLOOK

DEMS-RSMC TROPICAL CYCLONES NEW DELHI DATED 10.01.2024

TROPICAL WEATHER OUTLOOK FOR NORTH INDIAN OCEAN (THEBAY OF BENGAL OF BENGAL AND THE ARABIAN SEA) VALID FOR NEXT 168 HOURS ISSUED AT 0600 UTC OF 10.01.2024 BASED ON 0300 UTC OF 10.01.2024.

BAY OF BENGAL:

BROKEN LOW AND MEDIUM CLOUDS WITH EMBEDDED INTENSE TO VERY INTENSE CONVECTION LAY OVER SOUTHWEST BAY OF BENGAL ADJOINING EQUATORIAL INDIAN OCEAN GULF OF MANNAR SRI LANKA & NEIGHBOURHOOD PERSISTS (MINIMUM CTT MINUS 93 DEG CEL). SCATTERED LOW AND MEDIUM CLOUDS WITH EMBEDDED INTENSE CONVECTION LAY OVER SOUTHEAST BAY OF BENGAL SOUTH ANDAMAN SEA AND ISOLATED WEAK TO MODERATE CONVECTION LAY OVER CENTRAL BAY OF BENGAL.

***PROBABILITY OF CYCLOGENESIS (FORMATION OF DEPRESSION) DURING NEXT 168 HRS:**

24 HOURS	24-48 HOURS	48-72 HOURS	72-96 HOURS	96-120 HOURS	120-144 HOURS	144-168 HOURS
NIL	NIL	NIL	NIL	NIL	NIL	NIL

***NOTE: EVERY 24HR FORECAST IS VALID UPTO 0300 UTC (0830 IST) OF NEXT DAY**

ARABIAN SEA:

YESTERDAY'S CYCLONIC CIRCULATION FROM SOUTHEAST & ADJOINING EASTCENTRAL ARABIAN SEA EXTENDING UPTO 1.5 KM ABOVE MEAN SEA LEVEL BECAME LESS MARKED AT 0300 UTC OF TODAY, THE 10TH JANUARY, 2024.

A CYCLONIC CIRCULATION AT 1.5 KM ABOVE MEAN SEA LEVEL LAY OVER KERALA COAST AT 0300 UTC OF TODAY, THE 10TH JANUARY, 2024.

SCATTERED TO BROKEN LOW AND MEDIUM CLOUDS WITH EMBEDDED INTENSE TO VERY INTENSE CONVECTION LAY OVER COMORIN AREA (MINIMUM CTT MINUS 80 DEG CEL) AND MODERATE TO INTENSE CONVECTION LAY OVER SOUTHEAST ARABIAN SEA. SCATTERED LOW AND MEDIUM CLOUDS WITH EMBEDDED ISOLATED WEAK CONVECTION LAY OVER CENTRAL & SOUTHWEST ARABIAN SEA.

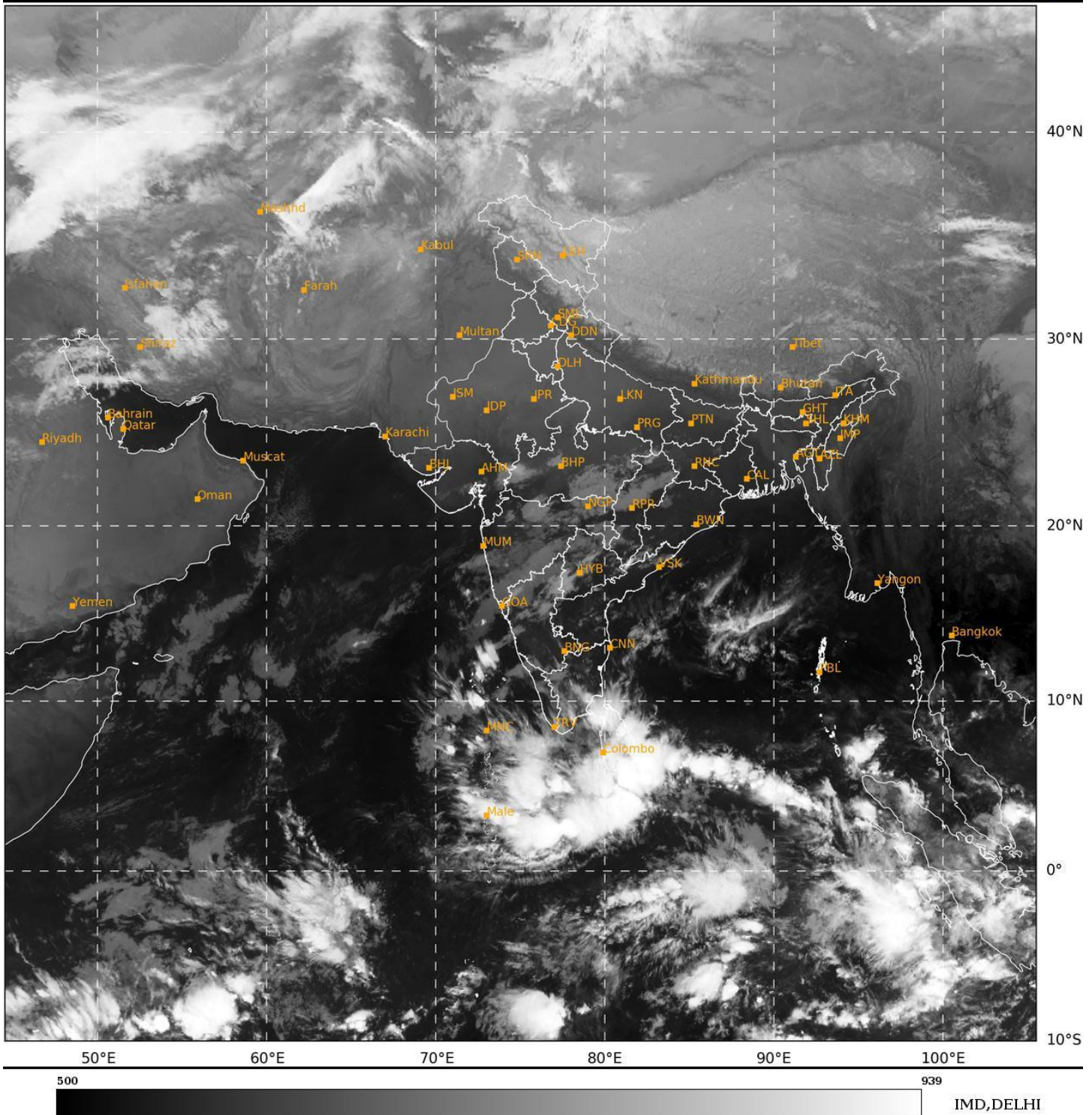
***PROBABILITY OF CYCLOGENESIS (FORMATION OF DEPRESSION) DURING NEXT 168 HRS:**

24 HOURS	24-48 HOURS	48-72 HOURS	72-96 HOURS	96-120 HOURS	120-144 HOURS	144-168 HOURS
NIL	NIL	NIL	NIL	NIL	NIL	NIL

***NOTE: EVERY 24HR FORECAST IS VALID UPTO 0300 UTC (0830 IST) OF NEXT DAY**

SAT : INSAT-3D IMG
IMG_TIR1 10.8 um
L1C Mercator

10-01-2024/(0300 to 0327) GMT
10-01-2024/(0830 to 0857) IST



IMD,DELHI